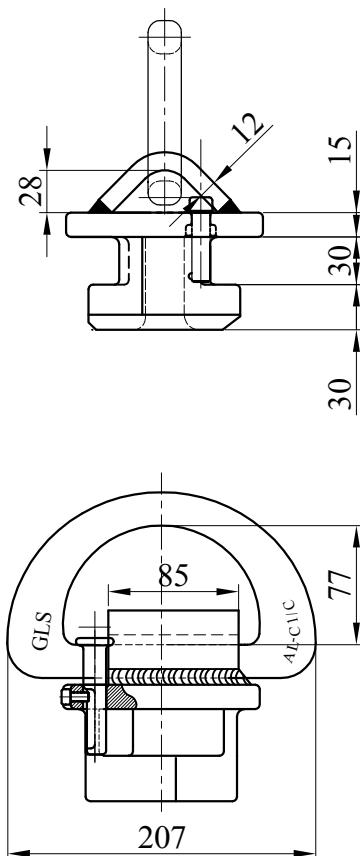


TURNFOOT D-RING 36TON

AL-L1



LOADS	SHEAR [KN]	TENSION [KN]
BREAKING LOAD	-	360
SAFE WORKING LOAD	-	180
TOTAL WEIGHT	6.2 KG	
MATERIAL	FORGED STEEL	
FINISH	HOT DIP GALVANISED	